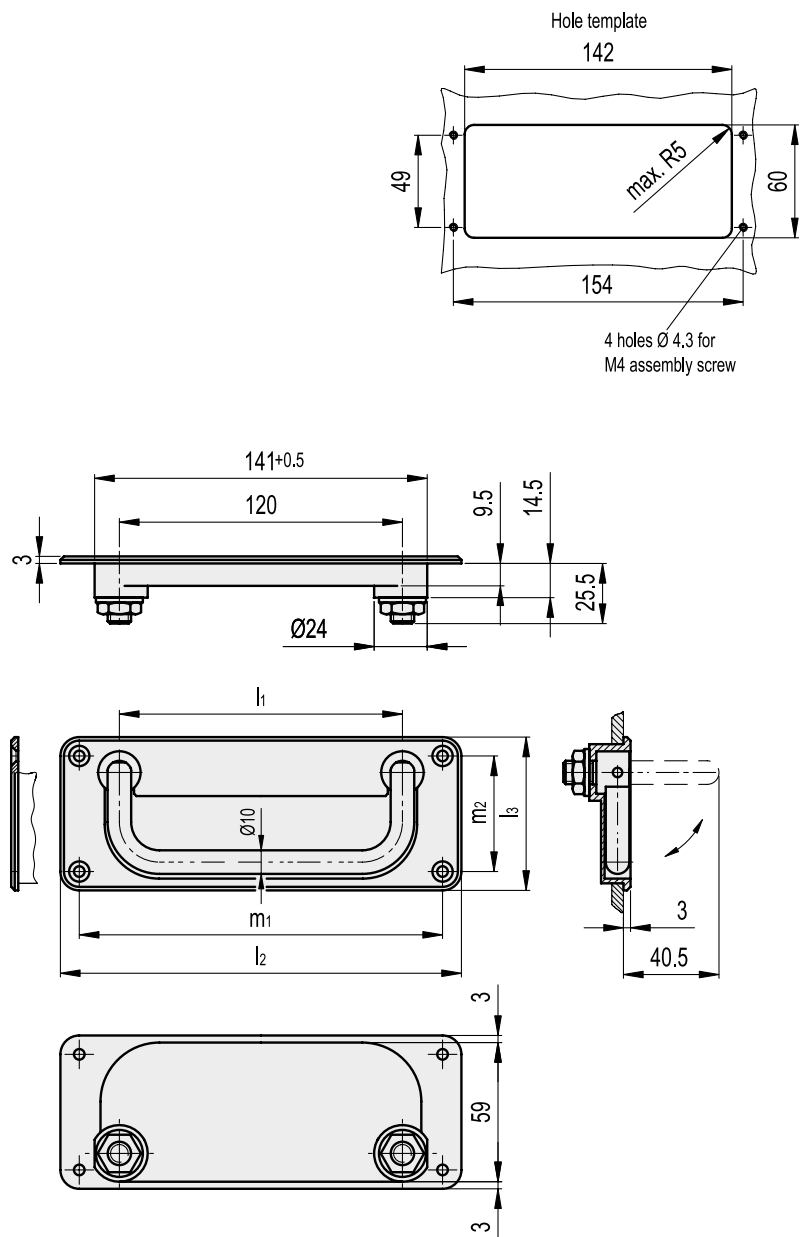


GN 425.4

Folding handle with recessed tray



- **Handles**
Chrome-plated steel.
 - **Tray**
Die-cast zinc alloy, epoxy resin coating, RAL 9005 black colour, matte finish.
 - **Standard execution**
Pass-through holes for countersunk head screws. The handle is supplied assembled to the tray.
- Features and applications**
GN 425.4 handles are particularly suitable in order to save space. The tray protrudes from the assembly surface by only 3 mm.



Code	Description	l1	l2	l3	l4	l5	l6	m1	m2	⚖
GN.26741	GN 425.4-120-CR-SW	120	170	65	154	49	402	402	402	402